

An abstract painting featuring a central, horizontal band of light blue and white, resembling a body of water or a path, surrounded by dense, dark, and colorful brushstrokes in shades of green, brown, and black. The overall composition is highly textured and expressive.

**SARAH POLAND**

Either Side of the Night

'Fond man! Vision of a moment made,  
Dream of a dream, shadow of a shade'  
*Edward Young (1681-1765);  
from the poem 'Night Thoughts)*



*Feeling the Earth Breathe* 2008  
Oil on canvas 40.5 x 40.5 cm

## **SARAH POLAND**

Either Side of the Night

6 – 28 Oct 2008  
Mon - Sat · 10 – 6

### **BELGRAVE GALLERY**

22 Fore Street  
St Ives  
Cornwall  
TR26 1HE  
Tel 01736 794888

stives@belgravegallery.com  
www.belgravegallery.com





*With the River in My Hair, I Bide Here in Hearts on the Mor* 2008  
Oil on canvas 24 x 30 cm

## Poem

Summer still,  
In the feline hour of prowl.  
Light wakes my sunken head  
And drifts it through the morning.

Soft sounds on my skin.

Before dusk,  
With a scare, out of some field,  
Above in synchronicity flowed.  
White and black,  
Dark and light,  
Seagulls and crows.

Some divine vision of peace and loyalty.

Along blackthorn bridal pathway  
And coconut scented briar,  
The wandering moonlight waltzed.

Delicious cool air bathe my skin  
And let my spirits ride your route to the stars.

Dense scented heather mor,  
With hollow ancient earthen pathways.  
Guide me to an understanding,  
Deeper into the distant land.

O' dreamer of dreams,  
Sing the song of the wildwood.

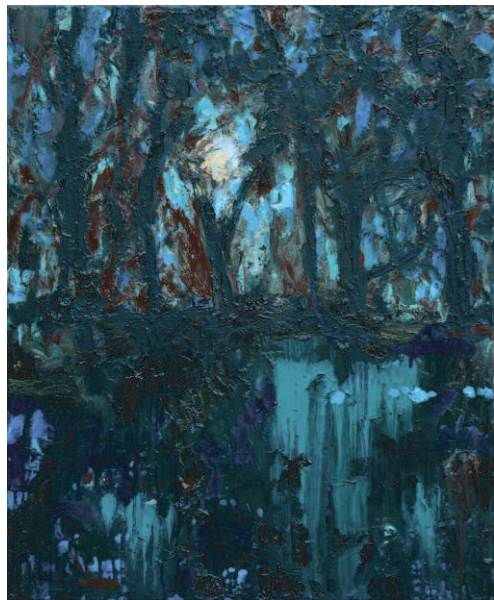
*Sarah Poland 2008*



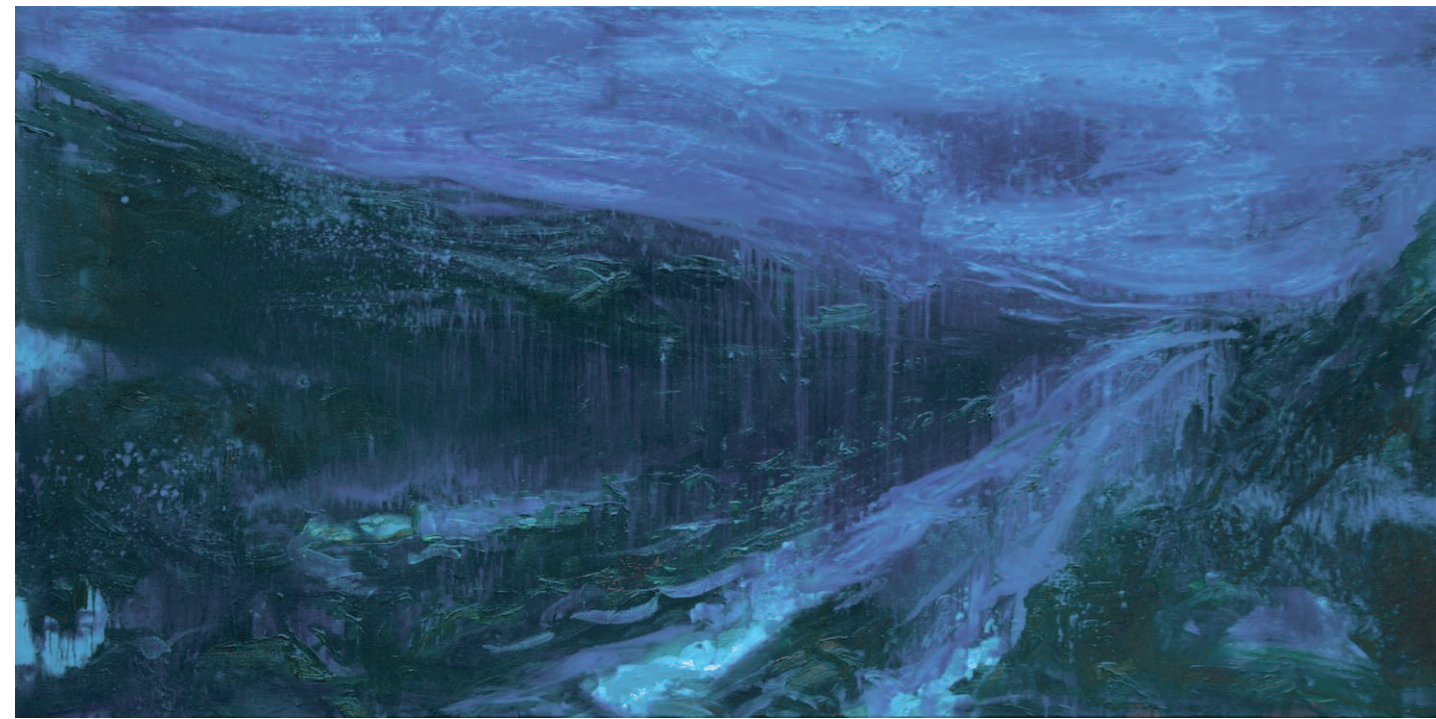


*Either Side of the Night* 2008  
Oil on canvas 100 x 200 cm



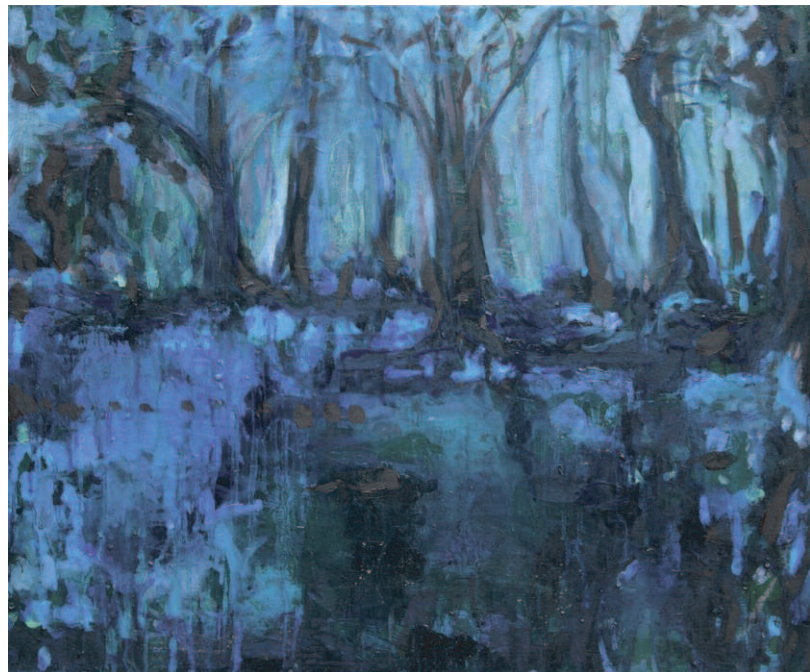


*While I Breathe I Feel* 2008  
Oil on canvas 65 x 54 cm



*Delicious Night Cool Air Bathe My Skin and  
Let My Spirits Ride Your Route to the Stars* 2008  
Oil on canvas 100 x 200 cm





*The Night Is Lush, the Air Is Still* 2008  
Oil on canvas 54 x 65 cm

*Song of the Wildwood* 2008  
Oil on board 96.5 x 120 cm







*Crows Converse with Kings* 2008  
Oil on canvas 65 x 54 cm



*Blue Side of the Night* 2008  
Oil on canvas 100 x 100 cm







*Home to Gulls and Dreams* 2008  
Oil on canvas 54 x 65 cm

*The Richness of Being* 2008  
Oil on canvas 120 x 150 cm







*The Returning Caw of the Raven* 2008  
Oil on paper 15 x 21 cm



*Dreamer of Dreams* 2008  
Oil on canvas 120 x 150 cm





*Dense Scented Heather Mor* 2008  
Gouache on paper 21 x 30 cm



*Where Trees Like Maidens Dance by Night* 2008  
Oil on canvas 100 x 200 cm





*Torrid Sun Rest Up, Let the Moon Dance a While* 2008  
Oil on paper 15.5 x 21.5 cm



*By the Side of the Day* 2008  
Oil on canvas 25 x 35 cm





*Whispering Between the Beatings of the Heart* 2008  
Oil on paper 14.5 x 21.2 cm



*Singing Sun, Weeping Warmth* 2008  
Oil on canvas 54 x 65 cm





*Perfumed and Enchanted Twilight* 2007  
Oil on paper 42 x 59.5 cm



*The Hour Before Dawn Is the Darkest Hour* 2007  
Mixed media on paper 42 x 59.5 cm



SARAH POLAND

Born 1974, Inverness.  
Studied: Edinburgh College of Art 1993-1997.  
Moved to Cornwall 2001.

One-person exhibitions

- 2008 ‘Either Side of the Night’, Belgrave Gallery, St Ives.
- 2006 ‘Tuath – Paintings’, Belgrave Gallery, St Ives.

Selected mixed exhibitions

- 2008 London Art Fair, Belgrave Gallery, St Ives.
- 2007 2nd X-posure – Revolver, ex-car showroom, Penzance.  
NSA Lineage, Penlee House Museum and Newlyn Art Gallery.  
St Ives – Selected Artists, to coincide with the book launch of *St Ives 1975-2005 – Art Colony in Transition*.  
‘Spontaneous Combustion II’, St Ives.  
London Art Fair, Belgrave Gallery.  
White Space, Totnes.
- 2006 ‘The Cornish Connection’, Belgrave Gallery, London.  
London Art Fair, Belgrave Gallery.  
White Space, Totnes
- 2005 ‘St Ives Past and Present’, Sherborne House, Dorset.  
‘NSA New Members’, Newlyn Gallery.  
London Art Fair, Edgar Modern.  
‘The Little Picture Show’, Rainyday Gallery, Penzance.  
White Space, Totnes.
- 2004 ‘29–92’, (four-person show), Belgrave Gallery, St Ives.  
Christmas Show, Edgar Modern, Bath.  
Cornwall Open Studios.  
‘St Ives – The Next Wave’, Hutson Gallery, London.  
‘St Ives Works’, Atelier Gallery, Essex.  
‘Porthmeor’, Belgrave Gallery, St Ives.

- 2003 ‘ID’, NSA members’ exhibition, Newlyn Gallery.  
Christmas Show, Belgrave Gallery, St Ives.  
‘A View of St Ives’, Belgrave Gallery, St Ives.  
Collyer-Bristow Gallery, Holborn, London.  
‘The Little Picture Show’, Rainyday Gallery, Penzance.
- 2002 Salt House Gallery, St Ives.

Artist-In-Residence Canford School, Dorset 2000.  
Elected member of the Newlyn Society of Artists (NSA) 2003.  
Elected committee member of Newlyn Society of Artists 2004.  
Artist Residency, The Booth, Shetland 2006.  
Received Creative Skills Development Fund printmaking grant 2006 & 2007.  
Artist residency, Cill Rialaig Project, Co Kerry, Ireland 2007.



Great Northern Star 2007  
Gouache on paper 10 x 15 cm



